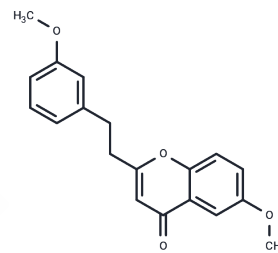


6-Methoxy-2-[2-(3'-methoxyphenyl)ethyl]chromone

Chemical Properties

CAS No. : 84294-88-2
 Formula: C₁₉H₁₈O₄
 Molecular Weight: 310.34
 Storage: Powder: -20°C for 3 years | In solvent: -80°C for 1 year
Actual storage temperature shall be subject to the COA.



Biological Description

Description	6-Methoxy-2-[2-(3'-methoxyphenyl)ethyl]chromone, designated as compound 12, is a type of chromone [1].
-------------	--

Preparing Stock Solutions

	1mg	5mg	10mg
1 mM	3.2223 mL	16.1114 mL	32.2227 mL
5 mM	0.6445 mL	3.2223 mL	6.4445 mL
10 mM	0.3222 mL	1.6111 mL	3.2223 mL
50 mM	0.0644 mL	0.3222 mL	0.6445 mL

Please select the appropriate solvent to prepare the stock solution, according to the solubility of the product in different solvents. Please use it as soon as possible.

Note: The dilution table applies only to solid products. For liquid products, please calculate the stock solution based on the stated concentration and/or density.

Inhibitor · Natural Compounds · Compound Libraries · Recombinant Proteins

This product is for Research Use Only · Not for Human or Veterinary or Therapeutic Use

Tel:781-999-4286 E_mail:info@targetmol.com Address:34 Washington Street,Wellesley Hills,MA 02481