

## Acetyl sh-heptapeptide-1

## Chemical Properties

CAS No. : 1356845-72-1

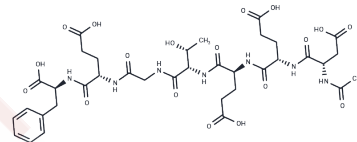
Formula: C<sub>36</sub>H<sub>49</sub>N<sub>7</sub>O<sub>18</sub>

Molecular Weight: 867.81

Keep away from moisture

Storage: Powder: -20°C for 3 years | In solvent: -80°C for 1 year

Actual storage temperature shall be subject to the COA.



## Biological Description

Description	Acetyl sh-heptapeptide-1, a polypeptide, has demonstrated efficacy in combatting facial aging [1].
-------------	--

## Preparing Stock Solutions

	1mg	5mg	10mg
1 mM	1.1523 mL	5.7616 mL	11.5233 mL
5 mM	0.2305 mL	1.1523 mL	2.3047 mL
10 mM	0.1152 mL	0.5762 mL	1.1523 mL
50 mM	0.023 mL	0.1152 mL	0.2305 mL

Please select the appropriate solvent to prepare the stock solution, according to the solubility of the product in different solvents. Please use it as soon as possible.

Note: The dilution table applies only to solid products. For liquid products, please calculate the stock solution based on the stated concentration and/or density.

**Inhibitor · Natural Compounds · Compound Libraries · Recombinant Proteins**

This product is for Research Use Only · Not for Human or Veterinary or Therapeutic Use

Tel:781-999-4286

E\_mail:info@targetmol.com

Address:34 Washington Street,Wellesley Hills,MA 02481