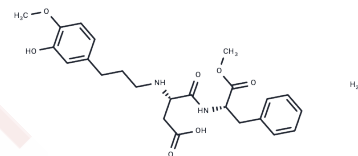


Advantame

Chemical Properties

CAS No. :	714229-20-6
Formula:	C ₂₄ H ₃₂ N ₂ O ₈
Molecular Weight:	476.52
Storage:	Powder: -20°C for 3 years In solvent: -80°C for 1 year Actual storage temperature shall be subject to the COA.



Biological Description

Description	Advantame is an N-alkylation derivative of aspartic acid of aspartyl sweetener, and is also a low-calorie sweetener with good tolerance in animals and humans.
Targets(IC50)	Others

Solubility Information

Solubility	DMSO: 80 mg/mL (167.88 mM), Sonication is recommended. (< 1 mg/ml refers to the product slightly soluble or insoluble)
------------	---

Preparing Stock Solutions

	1mg	5mg	10mg
1 mM	2.0985 mL	10.4927 mL	20.9855 mL
5 mM	0.4197 mL	2.0985 mL	4.1971 mL
10 mM	0.2099 mL	1.0493 mL	2.0985 mL
50 mM	0.042 mL	0.2099 mL	0.4197 mL

Please select the appropriate solvent to prepare the stock solution, according to the solubility of the product in different solvents. Please use it as soon as possible.

Note: The dilution table applies only to solid products. For liquid products, please calculate the stock solution based on the stated concentration and/or density.

Reference

Otabe A, Fujieda T, Masuyama T, Ubukata K, Lee C. Advantame--an overview of the toxicity data. Food Chem Toxicol. 2011;49 Suppl 1:S2-S7.

Inhibitor · Natural Compounds · Compound Libraries · Recombinant Proteins

This product is for Research Use Only · Not for Human or Veterinary or Therapeutic Use

Tel:781-999-4286 E_mail:info@targetmol.com Address:34 Washington Street,Wellesley Hills,MA 02481