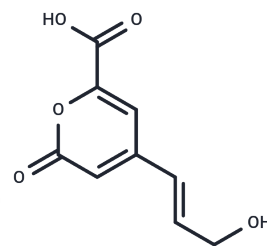


## Arabidopyl alcohol

## Chemical Properties

CAS No. : 1400234-92-5  
 Formula: C<sub>9</sub>H<sub>8</sub>O<sub>5</sub>  
 Molecular Weight: 196.16  
 Storage: Powder: -20°C for 3 years | In solvent: -80°C for 1 year  
*Actual storage temperature shall be subject to the COA.*



## Biological Description

Description	Arabidopyl alcohol, a natural compound, is derived from the bark of <i>Betula pendula</i> [1].
-------------	--

## Preparing Stock Solutions

	1mg	5mg	10mg
1 mM	5.0979 mL	25.4894 mL	50.9788 mL
5 mM	1.0196 mL	5.0979 mL	10.1958 mL
10 mM	0.5098 mL	2.5489 mL	5.0979 mL
50 mM	0.102 mL	0.5098 mL	1.0196 mL

Please select the appropriate solvent to prepare the stock solution, according to the solubility of the product in different solvents. Please use it as soon as possible.

Note: The dilution table applies only to solid products. For liquid products, please calculate the stock solution based on the stated concentration and/or density.

**Inhibitor · Natural Compounds · Compound Libraries · Recombinant Proteins**

This product is for Research Use Only · Not for Human or Veterinary or Therapeutic Use

Tel: 781-999-4286 E\_mail: info@targetmol.com Address: 34 Washington Street, Wellesley Hills, MA 02481