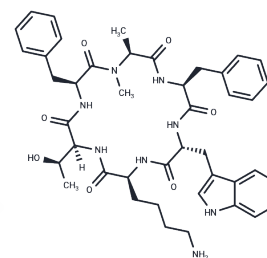


BIM-23027

Chemical Properties

CAS No. : 78981-49-4
 Formula: C43H54N8O7
 Molecular Weight: 794.94
 Storage: Keep away from moisture
 Powder: -20°C for 3 years | In solvent: -80°C for 1 year
Actual storage temperature shall be subject to the COA.



Biological Description

Description	BIM-23027 is a selective sst 2 receptor agonist (EC 50 = 0.32 nM) with effects analogous to the cyclic tetradecapeptide somatostatin (SRIF). It promotes dopamine release through a Glu-dependent mechanism [1] [2].
Targets(IC50)	Dopamine Receptor,Somatostatin
In vitro	BIM-23027 (10, 50, and 100 nM; 90 minutes) significantly increased dopamine levels [1].

Preparing Stock Solutions

	1mg	5mg	10mg
1 mM	1.258 mL	6.2898 mL	12.5796 mL
5 mM	0.2516 mL	1.258 mL	2.5159 mL
10 mM	0.1258 mL	0.629 mL	1.258 mL
50 mM	0.0252 mL	0.1258 mL	0.2516 mL

Please select the appropriate solvent to prepare the stock solution, according to the solubility of the product in different solvents. Please use it as soon as possible.

Note: The dilution table applies only to solid products. For liquid products, please calculate the stock solution based on the stated concentration and/or density.

Inhibitor · Natural Compounds · Compound Libraries · Recombinant Proteins

This product is for Research Use Only · Not for Human or Veterinary or Therapeutic Use

Tel:781-999-4286 E_mail:info@targetmol.com Address:34 Washington Street,Wellesley Hills,MA 02481