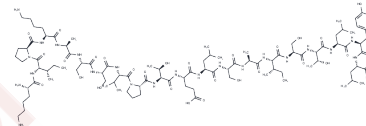


BMP2-derived peptide

Chemical Properties

CAS No. :	836606-84-9
Formula:	C97H165N23O29
Molecular Weight:	2117.48
Storage:	Keep away from moisture Powder: -20°C for 3 years In solvent: -80°C for 1 year <small>Actual storage temperature shall be subject to the COA.</small>



Biological Description

Description	BMP2-derived peptide, encompassing amino acids 73 to 92 of BMP-2, induces osteogenic differentiation in bone marrow stromal cells (BMSCs) and augments bone regeneration [1].
Targets(IC50)	TGF-beta/Smad

Preparing Stock Solutions

	1mg	5mg	10mg
1 mM	0.4723 mL	2.3613 mL	4.7226 mL
5 mM	0.0945 mL	0.4723 mL	0.9445 mL
10 mM	0.0472 mL	0.2361 mL	0.4723 mL
50 mM	0.0094 mL	0.0472 mL	0.0945 mL

Please select the appropriate solvent to prepare the stock solution, according to the solubility of the product in different solvents. Please use it as soon as possible.

Note: The dilution table applies only to solid products. For liquid products, please calculate the stock solution based on the stated concentration and/or density.

Inhibitor · Natural Compounds · Compound Libraries · Recombinant Proteins

This product is for Research Use Only · Not for Human or Veterinary or Therapeutic Use

Tel:781-999-4286 E_mail:info@targetmol.com Address:34 Washington Street,Wellesley Hills,MA 02481