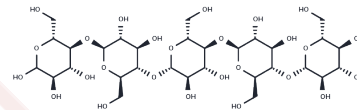


## Cellopentaose

## Chemical Properties

CAS No. : 2240-27-9  
Formula: C<sub>30</sub>H<sub>52</sub>O<sub>26</sub>  
Molecular Weight: 828.72  
Storage: Powder: -20°C for 3 years | In solvent: -80°C for 1 year  
Actual storage temperature shall be subject to the COA.



## Biological Description

Description	Cellopentaose is a cellulose-derived penta-oligosaccharide [1].
-------------	---

## Preparing Stock Solutions

	1mg	5mg	10mg
1 mM	1.2067 mL	6.0334 mL	12.0668 mL
5 mM	0.2413 mL	1.2067 mL	2.4134 mL
10 mM	0.1207 mL	0.6033 mL	1.2067 mL
50 mM	0.0241 mL	0.1207 mL	0.2413 mL

Please select the appropriate solvent to prepare the stock solution, according to the solubility of the product in different solvents. Please use it as soon as possible.

Note: The dilution table applies only to solid products. For liquid products, please calculate the stock solution based on the stated concentration and/or density.

Inhibitor · Natural Compounds · Compound Libraries · Recombinant Proteins

This product is for Research Use Only · Not for Human or Veterinary or Therapeutic Use

Tel: 781-999-4286 E\_mail: info@targetmol.com Address: 34 Washington Street, Wellesley Hills, MA 02481