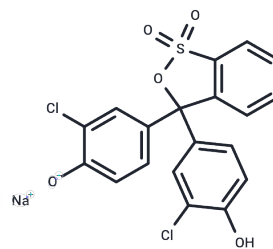


## Chlorophenol Red sodium

## Chemical Properties

CAS No. :	123333-64-2
Formula:	C <sub>19</sub> H <sub>11</sub> Cl <sub>2</sub> NaO <sub>5</sub> S
Molecular Weight:	445.25
Storage:	Keep away from direct sunlight Powder: -20°C for 3 years   In solvent: -80°C for 1 year <small>Actual storage temperature shall be subject to the COA.</small>



## Biological Description

Description	Chlorophenol Red sodium serves as a pH indicator [1].
Targets(IC50)	Others

## Preparing Stock Solutions

	1mg	5mg	10mg
1 mM	2.2459 mL	11.2296 mL	22.4593 mL
5 mM	0.4492 mL	2.2459 mL	4.4919 mL
10 mM	0.2246 mL	1.123 mL	2.2459 mL
50 mM	0.0449 mL	0.2246 mL	0.4492 mL

Please select the appropriate solvent to prepare the stock solution, according to the solubility of the product in different solvents. Please use it as soon as possible.

Note: The dilution table applies only to solid products. For liquid products, please calculate the stock solution based on the stated concentration and/or density.

**Inhibitor · Natural Compounds · Compound Libraries · Recombinant Proteins**

This product is for Research Use Only · Not for Human or Veterinary or Therapeutic Use

Tel: 781-999-4286 E\_mail: info@targetmol.com Address: 34 Washington Street, Wellesley Hills, MA 02481