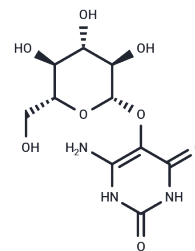


Convicine

Chemical Properties

CAS No. :	19286-37-4
Formula:	C ₁₀ H ₁₅ N ₃ O ₈
Molecular Weight:	305.24
Storage:	Powder: -20°C for 3 years In solvent: -80°C for 1 year Actual storage temperature shall be subject to the COA.



Biological Description

Description	Convicine, a pyrimidine glycoside found in faba beans [1] [2], serves as the precursor for the aglycones Divicine and Isouramil, alongside Vicine. It is a principal factor in favism, a genetic disorder that causes severe hemolysis following the consumption of faba
-------------	--

Preparing Stock Solutions

	1mg	5mg	10mg
1 mM	3.2761 mL	16.3806 mL	32.7611 mL
5 mM	0.6552 mL	3.2761 mL	6.5522 mL
10 mM	0.3276 mL	1.6381 mL	3.2761 mL
50 mM	0.0655 mL	0.3276 mL	0.6552 mL

Please select the appropriate solvent to prepare the stock solution, according to the solubility of the product in different solvents. Please use it as soon as possible.

Note: The dilution table applies only to solid products. For liquid products, please calculate the stock solution based on the stated concentration and/or density.

Inhibitor · Natural Compounds · Compound Libraries · Recombinant Proteins

This product is for Research Use Only · Not for Human or Veterinary or Therapeutic Use

Tel:781-999-4286 E_mail:info@targetmol.com Address:34 Washington Street,Wellesley Hills,MA 02481