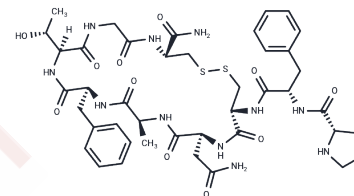


Crustacean cardioactive peptide, Cyclic

Chemical Properties

CAS No. :	107090-96-0
Formula:	C42H57N11O11S2
Molecular Weight:	956.1
Storage:	Keep away from moisture Powder: -20°C for 3 years In solvent: -80°C for 1 year <small>Actual storage temperature shall be subject to the COA.</small>



Biological Description

Description	Crustacean cardioactive peptide, Cyclic (CCAP) is a nine-amino-acid insect cardio regulatory peptide, initially isolated from <i>Manduca sexta</i> (the tobacco hawkmoth). It contains cysteines at positions 3 and 9 that form a disulfide bridge, and its carboxyl-terminus is amidated [1].
-------------	--

Preparing Stock Solutions

	1mg	5mg	10mg
1 mM	1.0459 mL	5.2296 mL	10.4592 mL
5 mM	0.2092 mL	1.0459 mL	2.0918 mL
10 mM	0.1046 mL	0.523 mL	1.0459 mL
50 mM	0.0209 mL	0.1046 mL	0.2092 mL

Please select the appropriate solvent to prepare the stock solution, according to the solubility of the product in different solvents. Please use it as soon as possible.

Note: The dilution table applies only to solid products. For liquid products, please calculate the stock solution based on the stated concentration and/or density.

Inhibitor · Natural Compounds · Compound Libraries · Recombinant Proteins

This product is for Research Use Only · Not for Human or Veterinary or Therapeutic Use

Tel: 781-999-4286 E_mail: info@targetmol.com Address: 34 Washington Street, Wellesley Hills, MA 02481