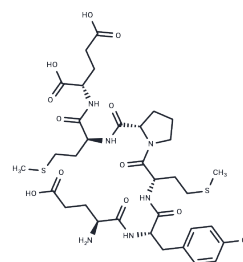


## EE epitope

## Chemical Properties

CAS No. :	221216-83-7
Formula:	C34H50N6O12S2
Molecular Weight:	798.92
Storage:	Keep away from moisture Powder: -20°C for 3 years   In solvent: -80°C for 1 year <small>Actual storage temperature shall be subject to the COA.</small>



## Biological Description

Description	EE epitope, a biologically active peptide, is a fragment (314 to 319 amino acids) of the middle T antigen from mouse polyomavirus and is frequently utilized as an epitope tag. Pyroglutamyl (pGlu) peptides, which can arise spontaneously at the N-terminus from either Glutamine (Q) or Glutamic acid (E), are recognized for potentially enhancing peptide stability through the hydrophobic $\gamma$ -lactam ring of pGlu, particularly against gastrointestinal proteases. Such peptides, as a normal variant, are accounted for within peptide purity assessments during HPLC analysis.
-------------	--

## Preparing Stock Solutions

	1mg	5mg	10mg
1 mM	1.2517 mL	6.2584 mL	12.5169 mL
5 mM	0.2503 mL	1.2517 mL	2.5034 mL
10 mM	0.1252 mL	0.6258 mL	1.2517 mL
50 mM	0.025 mL	0.1252 mL	0.2503 mL

Please select the appropriate solvent to prepare the stock solution, according to the solubility of the product in different solvents. Please use it as soon as possible.

Note: The dilution table applies only to solid products. For liquid products, please calculate the stock solution based on the stated concentration and/or density.

**Inhibitor · Natural Compounds · Compound Libraries · Recombinant Proteins**

This product is for Research Use Only · Not for Human or Veterinary or Therapeutic Use

Tel: 781-999-4286 E\_mail: info@targetmol.com Address: 34 Washington Street, Wellesley Hills, MA 02481