

EILDV (human, bovine, rat)

Chemical Properties

CAS No. : 150525-67-0

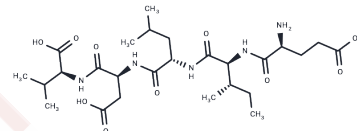
Formula: C₂₆H₄₅N₅O₁₀

Molecular Weight: 587.66

Keep away from moisture

Storage: Powder: -20°C for 3 years | In solvent: -80°C for 1 year

Actual storage temperature shall be subject to the COA.



Biological Description

Description	EILDV (human, bovine, rat) is a bioactive pentapeptide analog featuring the conserved tripeptide sequence LDV across human, bovine, and rat species, used in cell adhesion research [1].
In vitro	EILDV (human, bovine, rat) demonstrates significant efficacy in inhibiting cell adhesion [1].

Preparing Stock Solutions

	1mg	5mg	10mg
1 mM	1.7017 mL	8.5083 mL	17.0166 mL
5 mM	0.3403 mL	1.7017 mL	3.4033 mL
10 mM	0.1702 mL	0.8508 mL	1.7017 mL
50 mM	0.034 mL	0.1702 mL	0.3403 mL

Please select the appropriate solvent to prepare the stock solution, according to the solubility of the product in different solvents. Please use it as soon as possible.

Note: The dilution table applies only to solid products. For liquid products, please calculate the stock solution based on the stated concentration and/or density.

Inhibitor · Natural Compounds · Compound Libraries · Recombinant Proteins

This product is for Research Use Only · Not for Human or Veterinary or Therapeutic Use

Tel: 781-999-4286

E_mail: info@targetmol.com

Address: 34 Washington Street, Wellesley Hills, MA 02481