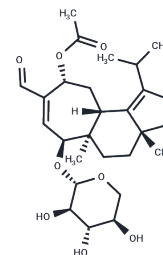


## Erinacine P

## Chemical Properties

CAS No. :	291532-17-7
Formula:	C <sub>27</sub> H <sub>40</sub> O <sub>8</sub>
Molecular Weight:	492.6
Storage:	Powder: -20°C for 3 years   In solvent: -80°C for 1 year Actual storage temperature shall be subject to the COA.



## Biological Description

Description	Erinacine P (compound 1), a precursor metabolite of luteolin, is derived from the mycelia of the basidiomycete <i>Hericium erinaceum</i> YB4-6237. This compound can undergo mild chemical conversion to Erinacine B, followed by transformation into Erinacine A [1].
-------------	--

## Preparing Stock Solutions

	1mg	5mg	10mg
1 mM	2.030 mL	10.1502 mL	20.3004 mL
5 mM	0.406 mL	2.030 mL	4.0601 mL
10 mM	0.203 mL	1.015 mL	2.030 mL
50 mM	0.0406 mL	0.203 mL	0.406 mL

Please select the appropriate solvent to prepare the stock solution, according to the solubility of the product in different solvents. Please use it as soon as possible.

Note: The dilution table applies only to solid products. For liquid products, please calculate the stock solution based on the stated concentration and/or density.

**Inhibitor · Natural Compounds · Compound Libraries · Recombinant Proteins**

This product is for Research Use Only · Not for Human or Veterinary or Therapeutic Use

Tel:781-999-4286 E\_mail:info@targetmol.com Address:34 Washington Street,Wellesley Hills,MA 02481