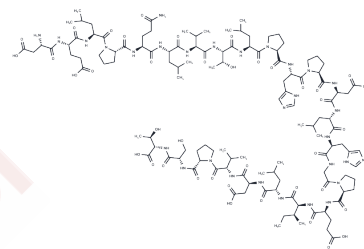


Fibronectin Type III Connecting Segment Fragment 1-25

Chemical Properties

CAS No. :	107978-77-8
Formula:	C123H195N31O39
Molecular Weight:	2732.05
Storage:	Keep away from moisture Powder: -20°C for 3 years In solvent: -80°C for 1 year <small>Actual storage temperature shall be subject to the COA.</small>



Biological Description

Description	Fibronectin Type III Connecting Segment Fragment 1-25 is a peptide involved in melanoma cell adhesion and essential for the development of the chicken peripheral nervous system [1] [2].
Targets(IC50)	Integrin

Preparing Stock Solutions

	1mg	5mg	10mg
1 mM	0.366 mL	1.8301 mL	3.6603 mL
5 mM	0.0732 mL	0.366 mL	0.7321 mL
10 mM	0.0366 mL	0.183 mL	0.366 mL
50 mM	0.0073 mL	0.0366 mL	0.0732 mL

Please select the appropriate solvent to prepare the stock solution, according to the solubility of the product in different solvents. Please use it as soon as possible.

Note: The dilution table applies only to solid products. For liquid products, please calculate the stock solution based on the stated concentration and/or density.

Inhibitor · Natural Compounds · Compound Libraries · Recombinant Proteins

This product is for Research Use Only · Not for Human or Veterinary or Therapeutic Use

Tel:781-999-4286 E_mail:info@targetmol.com Address:34 Washington Street,Wellesley Hills,MA 02481