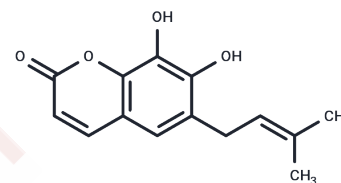


## Fipsomin

## Chemical Properties

CAS No. : 2143936-83-6  
 Formula: C<sub>14</sub>H<sub>14</sub>O<sub>4</sub>  
 Molecular Weight: 246.26  
 Storage: Powder: -20°C for 3 years | In solvent: -80°C for 1 year  
 Actual storage temperature shall be subject to the COA.



## Biological Description

Description	Fipsomin, a natural product, is isolatable from the fruits of <i>F. nipponica</i> [1].
-------------	--

## Preparing Stock Solutions

	1mg	5mg	10mg
1 mM	4.0607 mL	20.3037 mL	40.6075 mL
5 mM	0.8121 mL	4.0607 mL	8.1215 mL
10 mM	0.4061 mL	2.0304 mL	4.0607 mL
50 mM	0.0812 mL	0.4061 mL	0.8121 mL

Please select the appropriate solvent to prepare the stock solution, according to the solubility of the product in different solvents. Please use it as soon as possible.

Note: The dilution table applies only to solid products. For liquid products, please calculate the stock solution based on the stated concentration and/or density.

Inhibitor · Natural Compounds · Compound Libraries · Recombinant Proteins

This product is for Research Use Only · Not for Human or Veterinary or Therapeutic Use

Tel: 781-999-4286 E\_mail: info@targetmol.com Address: 34 Washington Street, Wellesley Hills, MA 02481