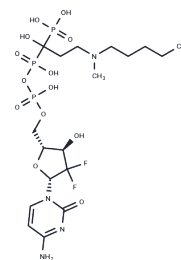


GEM-IB

Chemical Properties

CAS No. :	2866211-93-8
Formula:	C ₁₈ H ₃₃ F ₂ N ₄ O ₁₃ P ₃
Molecular Weight:	644.39
Storage:	Powder: -20°C for 3 years In solvent: -80°C for 1 year Actual storage temperature shall be subject to the COA.



Biological Description

Description	Gemcitabine-ibandronate (GEM-IB), a conjugate of gemcitabine (GEM)-5'-phosphate with ibandronate (IB), exhibits efficacy both as a monotherapy and synergistically with Docetaxel (DTX), resulting in diminished tumor burden, maintained bone structure, and enhanced survival in a murine osteosarcoma (OS) model [1].
Targets(IC50)	Others

Preparing Stock Solutions

	1mg	5mg	10mg
1 mM	1.5519 mL	7.7593 mL	15.5186 mL
5 mM	0.3104 mL	1.5519 mL	3.1037 mL
10 mM	0.1552 mL	0.7759 mL	1.5519 mL
50 mM	0.031 mL	0.1552 mL	0.3104 mL

Please select the appropriate solvent to prepare the stock solution, according to the solubility of the product in different solvents. Please use it as soon as possible.

Note: The dilution table applies only to solid products. For liquid products, please calculate the stock solution based on the stated concentration and/or density.

Inhibitor · Natural Compounds · Compound Libraries · Recombinant Proteins

This product is for Research Use Only · Not for Human or Veterinary or Therapeutic Use

Tel:781-999-4286 E_mail:info@targetmol.com Address:34 Washington Street,Wellesley Hills,MA 02481