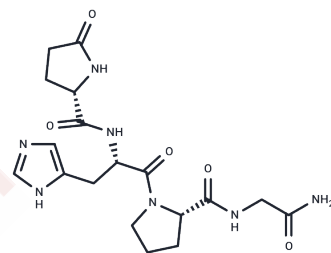


Glp-His-Pro-Gly-NH<sub>2</sub>

## Chemical Properties

CAS No. :	41880-59-5
Formula:	C <sub>18</sub> H <sub>25</sub> N <sub>7</sub> O <sub>5</sub>
Molecular Weight:	419.44
Storage:	Keep away from moisture Powder: -20°C for 3 years   In solvent: -80°C for 1 year <small>Actual storage temperature shall be subject to the COA.</small>



## Biological Description

Description	pGlu-His-Pro-Gly-NH <sub>2</sub> , also known as Glp-His-Pro-Gly-NH <sub>2</sub> , is a tetrapeptide that promotes the release of gonadotropin, luteinizing hormone (LH), and follicle-stimulating hormone (FSH) [1] [2].
Targets(IC <sub>50</sub> )	GNRH Receptor
In vitro	Glp-His-Pro-Gly-NH <sub>2</sub> (pGlu-His-Pro-Gly-NH <sub>2</sub> ; 6.6 µg/mL) effectively induces the release of luteinizing hormone (LH) and follicle-stimulating hormone (FSH) at rates of 85% and 96%, respectively [2].

## Preparing Stock Solutions

	1mg	5mg	10mg
1 mM	2.3841 mL	11.9207 mL	23.8413 mL
5 mM	0.4768 mL	2.3841 mL	4.7683 mL
10 mM	0.2384 mL	1.1921 mL	2.3841 mL
50 mM	0.0477 mL	0.2384 mL	0.4768 mL

Please select the appropriate solvent to prepare the stock solution, according to the solubility of the product in different solvents. Please use it as soon as possible.

Note: The dilution table applies only to solid products. For liquid products, please calculate the stock solution based on the stated concentration and/or density.

Inhibitor · Natural Compounds · Compound Libraries · Recombinant Proteins

This product is for Research Use Only · Not for Human or Veterinary or Therapeutic Use

Tel:781-999-4286 E\_mail:info@targetmol.com Address:34 Washington Street,Wellesley Hills,MA 02481