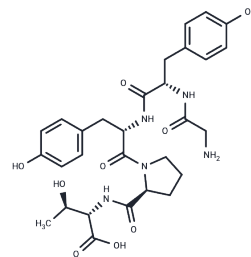


## Gluten Exorphin A5

## Chemical Properties

CAS No. :	142155-24-6
Formula:	C <sub>29</sub> H <sub>37</sub> N <sub>5</sub> O <sub>9</sub>
Molecular Weight:	599.63
Storage:	Keep away from moisture Powder: -20°C for 3 years   In solvent: -80°C for 1 year <small>Actual storage temperature shall be subject to the COA.</small>



## Biological Description

Description	Gluten Exorphin A5, a wheat gluten-derived peptide, exhibits neuroprotective properties and influences both the central and peripheral nervous systems [1].
-------------	---

## Preparing Stock Solutions

	1mg	5mg	10mg
1 mM	1.6677 mL	8.3385 mL	16.677 mL
5 mM	0.3335 mL	1.6677 mL	3.3354 mL
10 mM	0.1668 mL	0.8338 mL	1.6677 mL
50 mM	0.0334 mL	0.1668 mL	0.3335 mL

Please select the appropriate solvent to prepare the stock solution, according to the solubility of the product in different solvents. Please use it as soon as possible.

Note: The dilution table applies only to solid products. For liquid products, please calculate the stock solution based on the stated concentration and/or density.

**Inhibitor · Natural Compounds · Compound Libraries · Recombinant Proteins**

This product is for Research Use Only · Not for Human or Veterinary or Therapeutic Use

Tel: 781-999-4286 E\_mail: info@targetmol.com Address: 34 Washington Street, Wellesley Hills, MA 02481