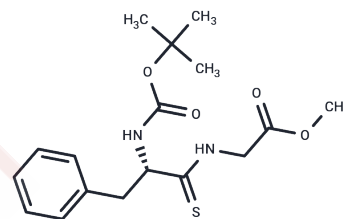


Glycine, N-[(1,1-dimethylethoxy)carbonyl]thio-L-phenylalanyl-, methyl ester

Chemical Properties

CAS No. : 128421-85-2
 Formula: C₁₇H₂₄N₂O₄S
 Molecular Weight: 352.45
 Storage: Powder: -20°C for 3 years | In solvent: -80°C for 1 year
 Actual storage temperature shall be subject to the COA.



Biological Description

Description	Glycine, N-[(1,1-dimethylethoxy)carbonyl]thio-L-phenylalanyl-, methyl ester (compound 3b) is a sulfamide-containing polypeptide used in synthesizing peptide-agent coupling compounds [1].
Targets(IC50)	Others

Preparing Stock Solutions

	1mg	5mg	10mg
1 mM	2.8373 mL	14.1864 mL	28.3728 mL
5 mM	0.5675 mL	2.8373 mL	5.6746 mL
10 mM	0.2837 mL	1.4186 mL	2.8373 mL
50 mM	0.0567 mL	0.2837 mL	0.5675 mL

Please select the appropriate solvent to prepare the stock solution, according to the solubility of the product in different solvents. Please use it as soon as possible.

Note: The dilution table applies only to solid products. For liquid products, please calculate the stock solution based on the stated concentration and/or density.

Inhibitor · Natural Compounds · Compound Libraries · Recombinant Proteins

This product is for Research Use Only · Not for Human or Veterinary or Therapeutic Use

Tel: 781-999-4286 E_mail: info@targetmol.com Address: 34 Washington Street, Wellesley Hills, MA 02481