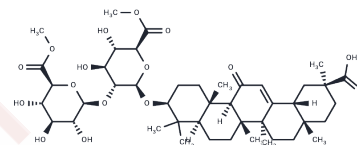


Glycyrrhizin-6',6''-dimethylester

Chemical Properties

CAS No. : 114006-81-4
 Formula: C44H66O16
 Molecular Weight: 850.99
 Storage: Powder: -20°C for 3 years | In solvent: -80°C for 1 year
 Actual storage temperature shall be subject to the COA.



Biological Description

Description	Glycyrrhizin-6',6''-dimethylester (compound 23), an aglycone derived from licorice saponin isolated from licorice root, contributes to the production of methyl glucuronate, yielding comparable sweetness, licorice flavor, and bitterness [1].
-------------	--

Preparing Stock Solutions

	1mg	5mg	10mg
1 mM	1.1751 mL	5.8755 mL	11.751 mL
5 mM	0.235 mL	1.1751 mL	2.3502 mL
10 mM	0.1175 mL	0.5876 mL	1.1751 mL
50 mM	0.0235 mL	0.1175 mL	0.235 mL

Please select the appropriate solvent to prepare the stock solution, according to the solubility of the product in different solvents. Please use it as soon as possible.

Note: The dilution table applies only to solid products. For liquid products, please calculate the stock solution based on the stated concentration and/or density.

Inhibitor · Natural Compounds · Compound Libraries · Recombinant Proteins

This product is for Research Use Only · Not for Human or Veterinary or Therapeutic Use

Tel: 781-999-4286 E_mail: info@targetmol.com Address: 34 Washington Street, Wellesley Hills, MA 02481