

Glycyrrhizin-6'-methylenelester

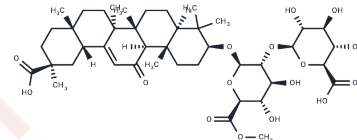
Chemical Properties

CAS No. : 1185255-36-0

Formula: C43H64O16

Molecular Weight: 836.96

Storage: Keep away from direct sunlight,
Powder: -20°C for 3 years | In solvent: -80°C for 1 year
Actual storage temperature shall be subject to the COA.



Biological Description

Description	Glycyrrhizin-6'-methylenelester, a naturally occurring compound, is isolatable from Glycyrrhiza glabra, commonly known as licorice [1].
Targets(IC50)	Immunology/Inflammation related

Preparing Stock Solutions

	1mg	5mg	10mg
1 mM	1.1948 mL	5.974 mL	11.948 mL
5 mM	0.239 mL	1.1948 mL	2.3896 mL
10 mM	0.1195 mL	0.5974 mL	1.1948 mL
50 mM	0.0239 mL	0.1195 mL	0.239 mL

Please select the appropriate solvent to prepare the stock solution, according to the solubility of the product in different solvents. Please use it as soon as possible.

Note: The dilution table applies only to solid products. For liquid products, please calculate the stock solution based on the stated concentration and/or density.

Inhibitor · Natural Compounds · Compound Libraries · Recombinant Proteins

This product is for Research Use Only · Not for Human or Veterinary or Therapeutic Use

Tel:781-999-4286

E_mail:info@targetmol.com

Address:34 Washington Street,Wellesley Hills,MA 02481