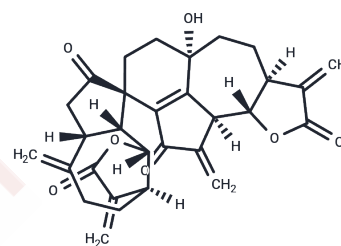


Gochnatiolide A

Chemical Properties

CAS No. :	87606-12-0
Formula:	C ₃₀ H ₃₀ O ₇
Molecular Weight:	502.56
Storage:	Powder: -20°C for 3 years In solvent: -80°C for 1 year Actual storage temperature shall be subject to the COA.



Biological Description

Description	Gochnatiolide A is a dimeric sesquiterpene derived from plants such as <i>Ainsliaea henryi</i> , exhibiting significant antiproliferative activity against various cancer cell lines, including renal, melanoma, ovarian-resistant, and glioma cells.
Targets(IC50)	Others
In vitro	Methods: 786.0, UACC-62, NCI-ADR/RES, U251, MCF-7, NCI-H460, HT-29, PC-3, OVCAR-3, VERO and K562 cells were treated with Gochnatiolide A (0.25-250 µg/mL; 48 h) and their TGI (total growth inhibition) values were determined. Results: Gochnatiolide A inhibited cell growth with TGI (total growth inhibition) values of 0.42, 0.49, 0.70, 1.09, 1.69, 4.66, 5.42, 6.63, 54.73, 13.13 and 114.87 µg/mL for 786.0, UACC-62, NCI-ADR/RES, U251, MCF-7, NCI-H460, HT-29, PC-3, OVCAR-3, VERO and K562 cells, respectively. [1]

Preparing Stock Solutions

	1mg	5mg	10mg
1 mM	1.9898 mL	9.9491 mL	19.8981 mL
5 mM	0.398 mL	1.9898 mL	3.9796 mL
10 mM	0.199 mL	0.9949 mL	1.9898 mL
50 mM	0.0398 mL	0.199 mL	0.398 mL

Please select the appropriate solvent to prepare the stock solution, according to the solubility of the product in different solvents. Please use it as soon as possible.

Note: The dilution table applies only to solid products. For liquid products, please calculate the stock solution based on the stated concentration and/or density.

Reference

Strapasson RLB, et, al. Bioactivity-guided isolation of cytotoxic sesquiterpene lactones of *Gochnatia polymorpha* ssp. *Floccose*. *Phytother Res*. 2012 Jul;26(7):1053-6.

Xiong HP, et, al. A dimeric sesquiterpene, gochnatiolide A. *Acta Crystallogr Sect E Struct Rep Online*. 2009 Oct 23; 65(Pt 11):o2847.

Inhibitor · Natural Compounds · Compound Libraries · Recombinant Proteins

This product is for Research Use Only · Not for Human or Veterinary or Therapeutic Use

Tel:781-999-4286 E_mail:info@targetmol.com Address:34 Washington Street,Wellesley Hills,MA 02481