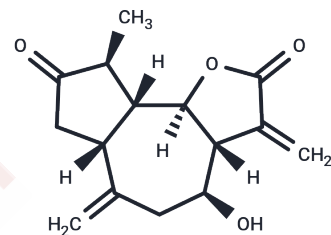


## Grosshemin

## Chemical Properties

CAS No. :	22489-66-3
Formula:	C <sub>15</sub> H <sub>18</sub> O <sub>4</sub>
Molecular Weight:	262.3
Storage:	Keep away from direct sunlight, Keep away from moisture Powder: -20°C for 3 years   In solvent: -80°C for 1 year <small>Actual storage temperature shall be subject to the COA.</small>



## Biological Description

Description	Grosshemin (Grosshemine), a natural sesquiterpene lactone widely derived from a variety of plants (e.g. Centaurea spp.), has anticancer potential by inhibiting cell proliferation in human tumor cell lines (A549, SK-OV-3, SK-MEL-2, HCT15).
Targets(IC50)	Apoptosis

## Preparing Stock Solutions

	1mg	5mg	10mg
1 mM	3.8124 mL	19.0621 mL	38.1243 mL
5 mM	0.7625 mL	3.8124 mL	7.6249 mL
10 mM	0.3812 mL	1.9062 mL	3.8124 mL
50 mM	0.0762 mL	0.3812 mL	0.7625 mL

Please select the appropriate solvent to prepare the stock solution, according to the solubility of the product in different solvents. Please use it as soon as possible.

Note: The dilution table applies only to solid products. For liquid products, please calculate the stock solution based on the stated concentration and/or density.

## Reference

- Navarro JJ, Caballero MC, Morán JR, Medarde M, Grande M, Anaya J. Guaianolides and eudesmanolides from *Centaurea ornata*. *J Nat Prod.* 1990 May-Jun;53(3):573-8.
- Saleh-E-In MM, Van Staden J. Ethnobotany, phytochemistry and pharmacology of *Arctotis arctotoides* (L.f.) O. Hoffm.: A review. *J Ethnopharmacol.* 2018 Jun 28;220:294-320.

**Inhibitor · Natural Compounds · Compound Libraries · Recombinant Proteins**

This product is for Research Use Only · Not for Human or Veterinary or Therapeutic Use

Tel:781-999-4286 E\_mail:info@targetmol.com Address:34 Washington Street,Wellesley Hills,MA 02481