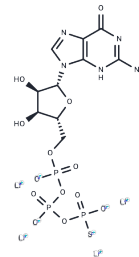


GTPyS tetralithium

Chemical Properties

CAS No. :	94825-44-2
Formula:	C ₁₀ H ₁₂ Li ₄ N ₅ O ₁₃ P ₃ S
Molecular Weight:	562.98
Storage:	Store at low temperature Powder: -20°C for 3 years In solvent: -80°C for 1 year <small>Actual storage temperature shall be subject to the COA.</small>



Biological Description

Description	GTPyS tetralithium (Guanosine 5'-[γ-thio]triphosphate tetralithium) is a G-protein activator, a non-hydrolyzable GTP analog that protects proteins from proteolytic degradation. GTPyS tetralithium is involved in the detection of cells expressing recombinant receptors and endogenous receptors. GTPyS tetralithium is involved in the detection of GPCR signaling in cells expressing recombinant receptors as well as in cells and tissues expressing endogenous receptors, and can be assayed to measure agonist-induced desensitization of two human polymorphic α2B-adrenoceptor variants.
Targets(IC50)	Others, transporter

Solubility Information

Solubility	H ₂ O: 80 mg/mL (142.1 mM), Sonication is recommended. (< 1 mg/ml refers to the product slightly soluble or insoluble)
------------	--

Preparing Stock Solutions

	1mg	5mg	10mg
1 mM	1.7763 mL	8.8813 mL	17.7626 mL
5 mM	0.3553 mL	1.7763 mL	3.5525 mL
10 mM	0.1776 mL	0.8881 mL	1.7763 mL
50 mM	0.0355 mL	0.1776 mL	0.3553 mL

Please select the appropriate solvent to prepare the stock solution, according to the solubility of the product in different solvents. Please use it as soon as possible.

Note: The dilution table applies only to solid products. For liquid products, please calculate the stock solution based on the stated concentration and/or density.

Reference

Hensler JG. Differential regulation of 5-HT1A receptor-G protein interactions in brain following chronic antidepressant administration. *Neuropsychopharmacology*. 2002 May;26(5):565-73.

Liu LB, et al. Insulin recruits GLUT4 from distinct compartments via distinct traffic pathways with differential microtubule dependence in rat adipocytes. *J Biol Chem*. 2003 Aug 8;278(32):30157-69.

Inhibitor · Natural Compounds · Compound Libraries · Recombinant Proteins

This product is for Research Use Only · Not for Human or Veterinary or Therapeutic Use

Tel:781-999-4286 E_mail:info@targetmol.com Address:34 Washington Street,Wellesley Hills,MA 02481