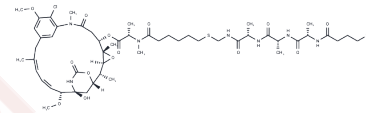


HS-(CH₂)₃CO-L-Ala-D-Ala-L-Ala-NH-CH₂-S-(CH₂)₅-CO-DM

Chemical Properties

CAS No. : 2243689-64-5
 Formula: C₅₂H₇₈ClN₇O₁₄S₂
 Molecular Weight: 1124.8
 Storage: Keep away from moisture
 Powder: -20°C for 3 years | In solvent: -80°C for 1 year
 Actual storage temperature shall be subject to the COA.



Biological Description

| | |
|---------------|--|
| Description | HS-(CH ₂) ₃ CO-L-Ala-D-Ala-L-Ala-NH-CH ₂ -S-(CH ₂) ₅ -CO-DM is a peptide-cleavable agent-linker conjugate used in antibody-drug conjugates (ADCs), with DM indicating the maytansinoid component [1]. |
| Targets(IC50) | Drug-Linker Conjugates for ADC |

Preparing Stock Solutions

| | 1mg | 5mg | 10mg |
|-------|-----------|-----------|-----------|
| 1 mM | 0.889 mL | 4.4452 mL | 8.8905 mL |
| 5 mM | 0.1778 mL | 0.889 mL | 1.7781 mL |
| 10 mM | 0.0889 mL | 0.4445 mL | 0.889 mL |
| 50 mM | 0.0178 mL | 0.0889 mL | 0.1778 mL |

Please select the appropriate solvent to prepare the stock solution, according to the solubility of the product in different solvents. Please use it as soon as possible.

Note: The dilution table applies only to solid products. For liquid products, please calculate the stock solution based on the stated concentration and/or density.

Inhibitor · Natural Compounds · Compound Libraries · Recombinant Proteins

This product is for Research Use Only · Not for Human or Veterinary or Therapeutic Use

Tel:781-999-4286 E_mail:info@targetmol.com Address:34 Washington Street,Wellesley Hills,MA 02481