

Human enteropeptidase-IN-3

Chemical Properties

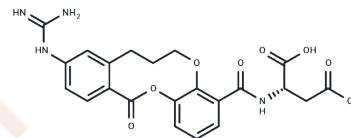
CAS No. : 1958037-36-9

Formula: C₂₂H₂₂N₄O₈

Molecular Weight: 470.43

Storage: Powder: -20°C for 3 years | In solvent: -80°C for 1 year

Actual storage temperature shall be subject to the COA.



Biological Description

Description	Human enteropeptidase-IN-3 is an inhibitor of enteropeptidase activity, distinguished by its extended duration of inhibition, and is applicable in the research of intestinal digestive-related diseases [1].
Targets(IC50)	Others,Enteropeptidase (EP)

Preparing Stock Solutions

	1mg	5mg	10mg
1 mM	2.1257 mL	10.6286 mL	21.2571 mL
5 mM	0.4251 mL	2.1257 mL	4.2514 mL
10 mM	0.2126 mL	1.0629 mL	2.1257 mL
50 mM	0.0425 mL	0.2126 mL	0.4251 mL

Please select the appropriate solvent to prepare the stock solution, according to the solubility of the product in different solvents. Please use it as soon as possible.

Note: The dilution table applies only to solid products. For liquid products, please calculate the stock solution based on the stated concentration and/or density.

Inhibitor · Natural Compounds · Compound Libraries · Recombinant Proteins

This product is for Research Use Only · Not for Human or Veterinary or Therapeutic Use

Tel:781-999-4286

E_mail:info@targetmol.com

Address:34 Washington Street,Wellesley Hills,MA 02481