

IGRP(206-214)

## Chemical Properties

CAS No. : 849069-99-4

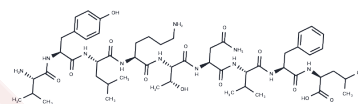
Formula: C54H85N11O13

Molecular Weight: 1096.32

Keep away from moisture

Storage: Powder: -20°C for 3 years | In solvent: -80°C for 1 year

Actual storage temperature shall be subject to the COA.



## Biological Description

Description	IGRP(206-214) is an bioactive peptide corresponding to residues 206-214 of the murine islet-specific glucose-6-phosphatase catalytic subunit-related protein (IGRP). It induces diabetes in non-obese diabetic (NOD) mice by being specific for T cells targeting both proinsulin and IGRP.
Targets(IC50)	Phosphatase

## Preparing Stock Solutions

	1mg	5mg	10mg
1 mM	0.9121 mL	4.5607 mL	9.1214 mL
5 mM	0.1824 mL	0.9121 mL	1.8243 mL
10 mM	0.0912 mL	0.4561 mL	0.9121 mL
50 mM	0.0182 mL	0.0912 mL	0.1824 mL

Please select the appropriate solvent to prepare the stock solution, according to the solubility of the product in different solvents. Please use it as soon as possible.

Note: The dilution table applies only to solid products. For liquid products, please calculate the stock solution based on the stated concentration and/or density.

Inhibitor · Natural Compounds · Compound Libraries · Recombinant Proteins

This product is for Research Use Only · Not for Human or Veterinary or Therapeutic Use

Tel:781-999-4286

E\_mail:info@targetmol.com

Address:34 Washington Street,Wellesley Hills,MA 02481