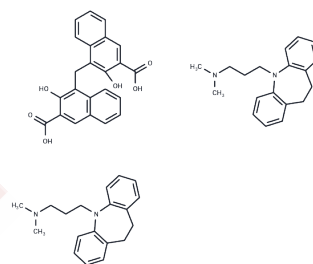


## Imipramine pamoate

## Chemical Properties

CAS No. :	10075-24-8
Formula:	C <sub>61</sub> H <sub>64</sub> N <sub>4</sub> O <sub>6</sub>
Molecular Weight:	949.18
Storage:	Powder: -20°C for 3 years   In solvent: -80°C for 1 year Actual storage temperature shall be subject to the COA.



## Biological Description

Description	Imipramine pamoate, a potent antidepressant [1] [2], is a chemical compound widely recognized for its efficacy in treating depressive disorders.
Targets(IC50)	Others, Monoamine Transporter

## Preparing Stock Solutions

	1mg	5mg	10mg
1 mM	1.0535 mL	5.2677 mL	10.5354 mL
5 mM	0.2107 mL	1.0535 mL	2.1071 mL
10 mM	0.1054 mL	0.5268 mL	1.0535 mL
50 mM	0.0211 mL	0.1054 mL	0.2107 mL

Please select the appropriate solvent to prepare the stock solution, according to the solubility of the product in different solvents. Please use it as soon as possible.

Note: The dilution table applies only to solid products. For liquid products, please calculate the stock solution based on the stated concentration and/or density.

Inhibitor · Natural Compounds · Compound Libraries · Recombinant Proteins

This product is for Research Use Only · Not for Human or Veterinary or Therapeutic Use

Tel: 781-999-4286 E\_mail: info@targetmol.com Address: 34 Washington Street, Wellesley Hills, MA 02481