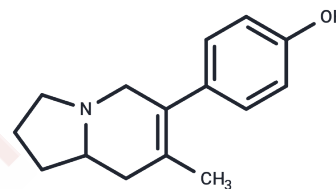


Ipalbidine

Chemical Properties

CAS No. : 26294-41-7
Formula: C₁₅H₁₉NO
Molecular Weight: 229.32
Storage: Powder: -20°C for 3 years | In solvent: -80°C for 1 year
Actual storage temperature shall be subject to the COA.



Biological Description

Description	Ipalbidine, an alkaloid derived from Ipomoea hardwickii Hemsl., exhibits dose-dependent analgesic effects [1].
-------------	--

Preparing Stock Solutions

	1mg	5mg	10mg
1 mM	4.3607 mL	21.8036 mL	43.6072 mL
5 mM	0.8721 mL	4.3607 mL	8.7214 mL
10 mM	0.4361 mL	2.1804 mL	4.3607 mL
50 mM	0.0872 mL	0.4361 mL	0.8721 mL

Please select the appropriate solvent to prepare the stock solution, according to the solubility of the product in different solvents. Please use it as soon as possible.

Note: The dilution table applies only to solid products. For liquid products, please calculate the stock solution based on the stated concentration and/or density.

Inhibitor · Natural Compounds · Compound Libraries · Recombinant Proteins

This product is for Research Use Only · Not for Human or Veterinary or Therapeutic Use

Tel:781-999-4286 E_mail:info@targetmol.com Address:34 Washington Street,Wellesley Hills,MA 02481