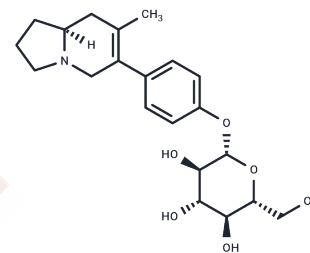


## Ipalbine

## Chemical Properties

CAS No. :	23544-46-9
Formula:	C <sub>21</sub> H <sub>29</sub> N <sub>0</sub> O <sub>6</sub>
Molecular Weight:	391.46
Storage:	Powder: -20°C for 3 years   In solvent: -80°C for 1 year Actual storage temperature shall be subject to the COA.



## Biological Description

Description	Ipalbine is an alkaloid of the hexahydroindolizine class, extractable from the plant Ipomoea alba L. [1].
-------------	---

## Preparing Stock Solutions

	1mg	5mg	10mg
1 mM	2.5545 mL	12.7727 mL	25.5454 mL
5 mM	0.5109 mL	2.5545 mL	5.1091 mL
10 mM	0.2555 mL	1.2773 mL	2.5545 mL
50 mM	0.0511 mL	0.2555 mL	0.5109 mL

Please select the appropriate solvent to prepare the stock solution, according to the solubility of the product in different solvents. Please use it as soon as possible.

Note: The dilution table applies only to solid products. For liquid products, please calculate the stock solution based on the stated concentration and/or density.

**Inhibitor · Natural Compounds · Compound Libraries · Recombinant Proteins**

This product is for Research Use Only · Not for Human or Veterinary or Therapeutic Use

Tel:781-999-4286 E\_mail:info@targetmol.com Address:34 Washington Street,Wellesley Hills,MA 02481