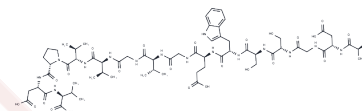


IRBP derived peptide, R16

## Chemical Properties

CAS No. : 145821-83-6  
 Formula: C64H96N16O24  
 Molecular Weight: 1473.54  
 Storage: Keep away from moisture  
 Powder: -20°C for 3 years | In solvent: -80°C for 1 year  
 Actual storage temperature shall be subject to the COA.



## Biological Description

Description	R16, an interphotoreceptor retinoid binding protein (IRBP)-derived peptide, exhibits biological activity with the capability to induce experimental autoimmune uveitis (EAU) in susceptible animal strains as a photoreceptor cell protein.
-------------	---

## Preparing Stock Solutions

	1mg	5mg	10mg
1 mM	0.6786 mL	3.3932 mL	6.7864 mL
5 mM	0.1357 mL	0.6786 mL	1.3573 mL
10 mM	0.0679 mL	0.3393 mL	0.6786 mL
50 mM	0.0136 mL	0.0679 mL	0.1357 mL

Please select the appropriate solvent to prepare the stock solution, according to the solubility of the product in different solvents. Please use it as soon as possible.

Note: The dilution table applies only to solid products. For liquid products, please calculate the stock solution based on the stated concentration and/or density.

Inhibitor · Natural Compounds · Compound Libraries · Recombinant Proteins

This product is for Research Use Only · Not for Human or Veterinary or Therapeutic Use

Tel:781-999-4286 E\_mail:info@targetmol.com Address:34 Washington Street,Wellesley Hills,MA 02481