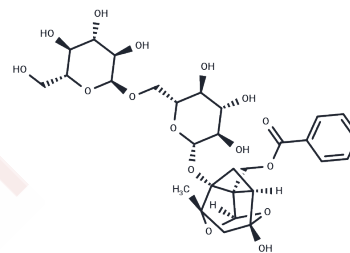


## Isomaltopaeoniflorin

## Chemical Properties

CAS No. :	262350-54-9
Formula:	C <sub>29</sub> H <sub>38</sub> O <sub>16</sub>
Molecular Weight:	642.6
Storage:	Powder: -20°C for 3 years   In solvent: -80°C for 1 year Actual storage temperature shall be subject to the COA.



## Biological Description

Description	Isomaltopaeoniflorin, a metabolite derived from the Chinese herbal formula Shuyu, functions as an inhibitor for conditions resembling depression [1].
-------------	---

## Preparing Stock Solutions

	1mg	5mg	10mg
1 mM	1.5562 mL	7.7809 mL	15.5618 mL
5 mM	0.3112 mL	1.5562 mL	3.1124 mL
10 mM	0.1556 mL	0.7781 mL	1.5562 mL
50 mM	0.0311 mL	0.1556 mL	0.3112 mL

Please select the appropriate solvent to prepare the stock solution, according to the solubility of the product in different solvents. Please use it as soon as possible.

Note: The dilution table applies only to solid products. For liquid products, please calculate the stock solution based on the stated concentration and/or density.

**Inhibitor · Natural Compounds · Compound Libraries · Recombinant Proteins**

This product is for Research Use Only · Not for Human or Veterinary or Therapeutic Use

Tel:781-999-4286 E\_mail:info@targetmol.com Address:34 Washington Street,Wellesley Hills,MA 02481