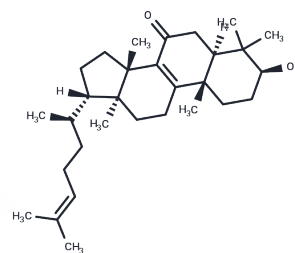


Kansene

Chemical Properties

CAS No. : 543691-16-3
 Formula: C₃₀H₄₈O₂
 Molecular Weight: 440.7
 Storage: Powder: -20°C for 3 years | In solvent: -80°C for 1 year
 Actual storage temperature shall be subject to the COA.



Biological Description

Description	Kansene, a euphane-type triterpene, is extractable from *Euphorbia kansui* using a 60% ethanol (EtOH) solution [1].
-------------	---

Preparing Stock Solutions

	1mg	5mg	10mg
1 mM	2.2691 mL	11.3456 mL	22.6912 mL
5 mM	0.4538 mL	2.2691 mL	4.5382 mL
10 mM	0.2269 mL	1.1346 mL	2.2691 mL
50 mM	0.0454 mL	0.2269 mL	0.4538 mL

Please select the appropriate solvent to prepare the stock solution, according to the solubility of the product in different solvents. Please use it as soon as possible.

Note: The dilution table applies only to solid products. For liquid products, please calculate the stock solution based on the stated concentration and/or density.

Inhibitor · Natural Compounds · Compound Libraries · Recombinant Proteins

This product is for Research Use Only · Not for Human or Veterinary or Therapeutic Use

Tel:781-999-4286 E_mail:info@targetmol.com Address:34 Washington Street,Wellesley Hills,MA 02481