

LE 28

## Chemical Properties

CAS No. : 1416080-97-1

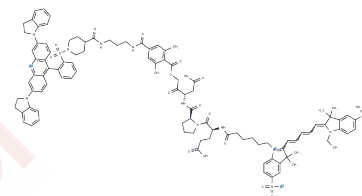
Formula: C102H111N10O21S3

Molecular Weight: 1909.22

Keep away from direct sunlight

Storage: Powder: -20°C for 3 years | In solvent: -80°C for 1 year

Actual storage temperature shall be subject to the COA.



## Biological Description

Description	LE 28 is a selective, activity-dependent probe for legumain that fluoresces exclusively upon binding to the active enzyme. It is applicable in research on cancers and inflammatory diseases [1].
Targets(IC50)	Others,Gamma-secretase
In vitro	LE 28 at concentrations ranging from 0 to 5 $\mu$ M, when administered for 1 hour, can be detected in RAW cell lysates through cleavage and subsequent fluorescent SDS-PAGE tagging of legumain [1].
In vivo	LE 28 (2 mg/kg, i.v.) induces a specific signal in mouse kidneys [1]. In the HCT-116 xenograft tumor model, the signal appears around the tumor at 30 minutes post-administration and reaches peak signal-to-noise ratio between the tumor and normal tissue at 7 hours [1].

## Preparing Stock Solutions

	1mg	5mg	10mg
1 mM	0.5238 mL	2.6189 mL	5.2377 mL
5 mM	0.1048 mL	0.5238 mL	1.0475 mL
10 mM	0.0524 mL	0.2619 mL	0.5238 mL
50 mM	0.0105 mL	0.0524 mL	0.1048 mL

Please select the appropriate solvent to prepare the stock solution, according to the solubility of the product in different solvents. Please use it as soon as possible.

Note: The dilution table applies only to solid products. For liquid products, please calculate the stock solution based on the stated concentration and/or density.

**Inhibitor · Natural Compounds · Compound Libraries · Recombinant Proteins**

This product is for Research Use Only · Not for Human or Veterinary or Therapeutic Use

Tel:781-999-4286 E\_mail:info@targetmol.com Address:34 Washington Street,Wellesley Hills,MA 02481