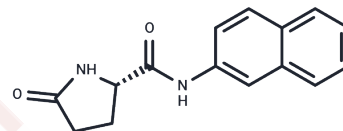


L-Pyroglutamic acid  $\beta$ -naphthylamide

## Chemical Properties

CAS No. :	22155-91-5
Formula:	C <sub>15</sub> H <sub>14</sub> N <sub>2</sub> O <sub>2</sub>
Molecular Weight:	254.28
Storage:	Keep away from direct sunlight Powder: -20°C for 3 years   In solvent: -80°C for 1 year <small>Actual storage temperature shall be subject to the COA.</small>



## Biological Description

Description	L-Pyroglutamic acid $\beta$ -naphthylamide (PYR) is a derivative of glutamic acid.
Targets(IC50)	Amino Acids and Derivatives

## Preparing Stock Solutions

	1mg	5mg	10mg
1 mM	3.9327 mL	19.6634 mL	39.3267 mL
5 mM	0.7865 mL	3.9327 mL	7.8653 mL
10 mM	0.3933 mL	1.9663 mL	3.9327 mL
50 mM	0.0787 mL	0.3933 mL	0.7865 mL

Please select the appropriate solvent to prepare the stock solution, according to the solubility of the product in different solvents. Please use it as soon as possible.

Note: The dilution table applies only to solid products. For liquid products, please calculate the stock solution based on the stated concentration and/or density.

**Inhibitor · Natural Compounds · Compound Libraries · Recombinant Proteins**

This product is for Research Use Only · Not for Human or Veterinary or Therapeutic Use

Tel: 781-999-4286 E\_mail: info@targetmol.com Address: 34 Washington Street, Wellesley Hills, MA 02481