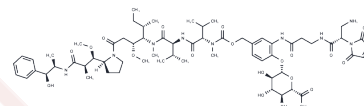


## MC-betaglucuronide-MMAE-2

## Chemical Properties

CAS No. :	1703778-81-7
Formula:	C63H93N9O20
Molecular Weight:	1296.46
Storage:	Powder: -20°C for 3 years   In solvent: -80°C for 1 year Actual storage temperature shall be subject to the COA.



## Biological Description

Description	MC-betaglucuronide-MMAE-2 is an ADC (antibody-drug conjugate) agent-linker conjugate that exhibits potent antitumor activity; it consists of MMAE (a tubulin polymerization inhibitor) connected through the cleavable linker MC-betaglucuronide.
Targets(IC50)	Drug-Linker Conjugates for ADC

## Preparing Stock Solutions

	1mg	5mg	10mg
1 mM	0.7713 mL	3.8567 mL	7.7133 mL
5 mM	0.1543 mL	0.7713 mL	1.5427 mL
10 mM	0.0771 mL	0.3857 mL	0.7713 mL
50 mM	0.0154 mL	0.0771 mL	0.1543 mL

Please select the appropriate solvent to prepare the stock solution, according to the solubility of the product in different solvents. Please use it as soon as possible.

Note: The dilution table applies only to solid products. For liquid products, please calculate the stock solution based on the stated concentration and/or density.

Inhibitor · Natural Compounds · Compound Libraries · Recombinant Proteins

This product is for Research Use Only · Not for Human or Veterinary or Therapeutic Use

Tel:781-999-4286 E\_mail:info@targetmol.com Address:34 Washington Street,Wellesley Hills,MA 02481