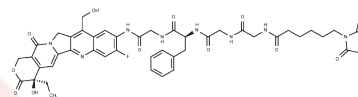


## MC-GGFG-(7ethanol-10NH2-11F-Camptothecin)

## Chemical Properties

|                   |   |
|-------------------|---|
| CAS No. :         | 2873460-72-9  |
| Formula:          | C <sub>46</sub> H <sub>47</sub> N <sub>8</sub> O <sub>12</sub>  |
| Molecular Weight: | 922.91  |
| Storage:          | Powder: -20°C for 3 years   In solvent: -80°C for 1 year<br>Actual storage temperature shall be subject to the COA. |



## Biological Description

|               |   |
|---------------|---|
| Description   | MC-GGFG-(7ethanol-10NH2-11F-Camptothecin) (compound 141) is a protease-cleavable drug-linker conjugate utilized in antibody-drug conjugates (ADCs), featuring an MC-GGFG linker that allows for enzymatic cleavage [1]. |
| Targets(IC50) | Drug-Linker Conjugates for ADC  |

## Preparing Stock Solutions

|       | 1mg       | 5mg       | 10mg       |
|-------|-----------|-----------|------------|
| 1 mM  | 1.0835 mL | 5.4176 mL | 10.8353 mL |
| 5 mM  | 0.2167 mL | 1.0835 mL | 2.1671 mL  |
| 10 mM | 0.1084 mL | 0.5418 mL | 1.0835 mL  |
| 50 mM | 0.0217 mL | 0.1084 mL | 0.2167 mL  |

Please select the appropriate solvent to prepare the stock solution, according to the solubility of the product in different solvents. Please use it as soon as possible.

Note: The dilution table applies only to solid products. For liquid products, please calculate the stock solution based on the stated concentration and/or density.

Inhibitor · Natural Compounds · Compound Libraries · Recombinant Proteins

This product is for Research Use Only · Not for Human or Veterinary or Therapeutic Use

Tel:781-999-4286 E\_mail:info@targetmol.com Address:34 Washington Street,Wellesley Hills,MA 02481