

NBD-LLLLpY

Chemical Properties

CAS No. : 2883234-17-9

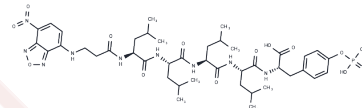
Formula: C42H62N9O14P

Molecular Weight: 947.97

Keep away from moisture

Storage: Powder: -20°C for 3 years | In solvent: -80°C for 1 year

Actual storage temperature shall be subject to the COA.



Biological Description

Description	NBD-LLLLpY is a peptide synthesized enzymatically within the nucleus to selectively target and eliminate human induced pluripotent stem cells (hiPSCs).
-------------	---

Preparing Stock Solutions

	1mg	5mg	10mg
1 mM	1.0549 mL	5.2744 mL	10.5489 mL
5 mM	0.211 mL	1.0549 mL	2.1098 mL
10 mM	0.1055 mL	0.5274 mL	1.0549 mL
50 mM	0.0211 mL	0.1055 mL	0.211 mL

Please select the appropriate solvent to prepare the stock solution, according to the solubility of the product in different solvents. Please use it as soon as possible.

Note: The dilution table applies only to solid products. For liquid products, please calculate the stock solution based on the stated concentration and/or density.

Inhibitor · Natural Compounds · Compound Libraries · Recombinant Proteins

This product is for Research Use Only · Not for Human or Veterinary or Therapeutic Use

Tel:781-999-4286

E_mail:info@targetmol.com

Address:34 Washington Street,Wellesley Hills,MA 02481