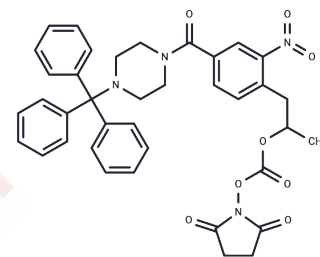


NCP2 Anchor

Chemical Properties

CAS No. :	1380600-13-4
Formula:	C38H36N4O8
Molecular Weight:	676.71
Storage:	Powder: -20°C for 3 years In solvent: -80°C for 1 year Actual storage temperature shall be subject to the COA.



Biological Description

Description	NCP2 Anchor is employed in synthesizing exon jumping oligomer conjugates that align with specific target sequences within the human anti-muscular atrophy protein gene to promote exon 52 skipping, facilitating research into muscular dystrophy [1].
Targets(IC50)	Others

Preparing Stock Solutions

	1mg	5mg	10mg
1 mM	1.4777 mL	7.3887 mL	14.7774 mL
5 mM	0.2955 mL	1.4777 mL	2.9555 mL
10 mM	0.1478 mL	0.7389 mL	1.4777 mL
50 mM	0.0296 mL	0.1478 mL	0.2955 mL

Please select the appropriate solvent to prepare the stock solution, according to the solubility of the product in different solvents. Please use it as soon as possible.

Note: The dilution table applies only to solid products. For liquid products, please calculate the stock solution based on the stated concentration and/or density.

Inhibitor · Natural Compounds · Compound Libraries · Recombinant Proteins

This product is for Research Use Only · Not for Human or Veterinary or Therapeutic Use

Tel: 781-999-4286 E_mail: info@targetmol.com Address: 34 Washington Street, Wellesley Hills, MA 02481