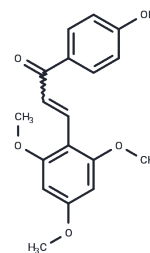


NorA-IN-1

Chemical Properties

CAS No. : 1389310-69-3
 Formula: C₁₈H₁₈O₅
 Molecular Weight: 314.33
 Storage: Powder: -20°C for 3 years | In solvent: -80°C for 1 year
Actual storage temperature shall be subject to the COA.



Biological Description

Description	NorA-IN-1 is a NorA efflux inhibitor, which can be used to study overcoming multidrug resistance based on microbial efflux transporter proteins.
Targets(IC50)	Others,Antibacterial

Solubility Information

Solubility	DMSO: 30 mg/mL (95.44 mM),when pH is adjusted to 2 with HCl. Sonication is recommended. (< 1 mg/ml refers to the product slightly soluble or insoluble)
In vivo Formulation	10% DMSO+40% PEG300+5% Tween 80+45% Saline: 2 mg/mL (6.36 mM),Sonication is recommended. <i>Please add the solvents sequentially, clarifying the solution as much as possible before adding the next one. Dissolve by heating and/or sonication if necessary. Working solution is recommended to be prepared and used immediately. The formulation provided above is for reference purposes only. In vivo formulations may vary and should be modified based on specific experimental conditions.</i>

Preparing Stock Solutions

	1mg	5mg	10mg
1 mM	3.1814 mL	15.9068 mL	31.8137 mL
5 mM	0.6363 mL	3.1814 mL	6.3627 mL
10 mM	0.3181 mL	1.5907 mL	3.1814 mL
50 mM	0.0636 mL	0.3181 mL	0.6363 mL

Please select the appropriate solvent to prepare the stock solution, according to the solubility of the product in different solvents. Please use it as soon as possible.

Note: The dilution table applies only to solid products. For liquid products, please calculate the stock solution based on the stated concentration and/or density.

Reference

Holler JG, et al. Chalcone inhibitors of the NorA efflux pump in Staphylococcus aureus whole cells and enriched everted membrane vesicles. Bioorg Med Chem. 2012 Jul 15;20(14):4514-21.

Inhibitor · Natural Compounds · Compound Libraries · Recombinant Proteins

This product is for Research Use Only · Not for Human or Veterinary or Therapeutic Use

Tel:781-999-4286 E_mail:info@targetmol.com Address:34 Washington Street,Wellesley Hills,MA 02481