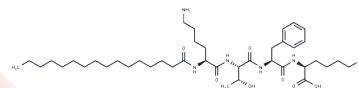


Palmitoyl tetrapeptide-10

Chemical Properties

CAS No. :	887140-79-6
Formula:	C41H72N6O7
Molecular Weight:	761.05
Storage:	Keep away from moisture Powder: -20°C for 3 years In solvent: -80°C for 1 year <small>Actual storage temperature shall be subject to the COA.</small>



Biological Description

Description	Palmitoyl tetrapeptide-10 is a bioactive peptide that works synergistically with other active ingredients to increase the expression of corneodesmosin (a marker of keratinocyte adhesion) and filaggrin (a marker of keratinocyte terminal differentiation), thereby reducing skin permeability and improving skin barrier function. Palmitoyl tetrapeptide-10 can be used in research on sensitive skin syndrome and skin pigmentation.
Targets(IC50)	Others

Preparing Stock Solutions

	1mg	5mg	10mg
1 mM	1.314 mL	6.5699 mL	13.1397 mL
5 mM	0.2628 mL	1.314 mL	2.6279 mL
10 mM	0.1314 mL	0.657 mL	1.314 mL
50 mM	0.0263 mL	0.1314 mL	0.2628 mL

Please select the appropriate solvent to prepare the stock solution, according to the solubility of the product in different solvents. Please use it as soon as possible.

Note: The dilution table applies only to solid products. For liquid products, please calculate the stock solution based on the stated concentration and/or density.

Reference

- Polena H, et al. Evaluation of the sensitive skin syndrome and the effect of a dermo-cosmetic treatment in Thai and Polish subjects. *Int J Cosmet Sci.* 2025 Aug 19.
- Wenner K, et al. An Open-Label Study Assessing the Efficacy and Tolerability of a Skincare Regimen in Subjects of Different Ethnicities with Moderate-to-Severe Hyperpigmentation. *J Cosmet Dermatol.* 2022;21(6):2497-2507.

Inhibitor · Natural Compounds · Compound Libraries · Recombinant Proteins

This product is for Research Use Only · Not for Human or Veterinary or Therapeutic Use

Tel:781-999-4286 E_mail:info@targetmol.com Address:34 Washington Street,Wellesley Hills,MA 02481