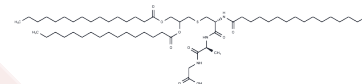


Pam3-Cys-Ala-Gly

Chemical Properties

| | |
|-------------------|---|
| CAS No. : | 117858-54-5 |
| Formula: | C ₅₉ H ₁₁₁ N ₃ O ₉ S |
| Molecular Weight: | 1038.59 |
| Storage: | Keep away from moisture Powder: -20°C for 3 years In solvent: -80°C for 1 year <small>Actual storage temperature shall be subject to the COA.</small> |



Biological Description

| | |
|---------------|--|
| Description | Pam3-Cys-Ala-Gly, a synthetic bacterial lipopeptide, is a potent activator of macrophages and B cells [1]. |
| Targets(IC50) | Antibacterial |

Preparing Stock Solutions

| | 1mg | 5mg | 10mg |
|-------|-----------|-----------|-----------|
| 1 mM | 0.9628 mL | 4.8142 mL | 9.6284 mL |
| 5 mM | 0.1926 mL | 0.9628 mL | 1.9257 mL |
| 10 mM | 0.0963 mL | 0.4814 mL | 0.9628 mL |
| 50 mM | 0.0193 mL | 0.0963 mL | 0.1926 mL |

Please select the appropriate solvent to prepare the stock solution, according to the solubility of the product in different solvents. Please use it as soon as possible.

Note: The dilution table applies only to solid products. For liquid products, please calculate the stock solution based on the stated concentration and/or density.

Inhibitor · Natural Compounds · Compound Libraries · Recombinant Proteins

This product is for Research Use Only · Not for Human or Veterinary or Therapeutic Use

Tel: 781-999-4286 E_mail: info@targetmol.com Address: 34 Washington Street, Wellesley Hills, MA 02481