

PAT1inh-B01

Chemical Properties

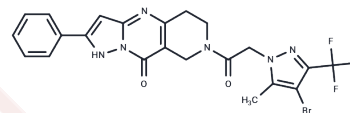
CAS No. : 1775330-54-5

Formula: C₂₂H₁₈BrF₃N₆O₂

Molecular Weight: 535.32

Storage: Powder: -20°C for 3 years | In solvent: -80°C for 1 year

Actual storage temperature shall be subject to the COA.



Biological Description

Description	PAT1inh-B01, a selective SLC26A6 inhibitor, impedes PAT1 (a Cl ⁻ /HCO ₃ ⁻ exchanger) activity, with an IC ₅₀ of 350 nM, effectively inhibiting anion exchange. It also obstructs fluid absorption in the small intestine and is utilized in the study of small intestinal hyposcretory disorders [1].
Targets(IC ₅₀)	Others,Chloride channel

Preparing Stock Solutions

	1mg	5mg	10mg
1 mM	1.868 mL	9.3402 mL	18.6804 mL
5 mM	0.3736 mL	1.868 mL	3.7361 mL
10 mM	0.1868 mL	0.934 mL	1.868 mL
50 mM	0.0374 mL	0.1868 mL	0.3736 mL

Please select the appropriate solvent to prepare the stock solution, according to the solubility of the product in different solvents. Please use it as soon as possible.

Note: The dilution table applies only to solid products. For liquid products, please calculate the stock solution based on the stated concentration and/or density.

Inhibitor · Natural Compounds · Compound Libraries · Recombinant Proteins

This product is for Research Use Only · Not for Human or Veterinary or Therapeutic Use

Tel:781-999-4286

E_mail:info@targetmol.com

Address:34 Washington Street,Wellesley Hills,MA 02481