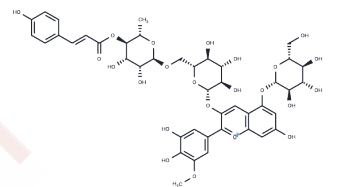


## Petanin chloride

## Chemical Properties

CAS No. : 69915-09-9  
 Formula: C43H49ClO23  
 Molecular Weight: 969.29  
 Storage: Powder: -20°C for 3 years | In solvent: -80°C for 1 year  
*Actual storage temperature shall be subject to the COA.*



## Biological Description

Description	Petanin (chloride) is a p-coumaroyl anthocyanin extracted from the tuber epidermis of the colored potato variety <i>Solanum tuberosum</i> L. cv 'Jayoung' [1].
-------------	--

## Preparing Stock Solutions

	1mg	5mg	10mg
1 mM	1.0317 mL	5.1584 mL	10.3168 mL
5 mM	0.2063 mL	1.0317 mL	2.0634 mL
10 mM	0.1032 mL	0.5158 mL	1.0317 mL
50 mM	0.0206 mL	0.1032 mL	0.2063 mL

Please select the appropriate solvent to prepare the stock solution, according to the solubility of the product in different solvents. Please use it as soon as possible.

Note: The dilution table applies only to solid products. For liquid products, please calculate the stock solution based on the stated concentration and/or density.

**Inhibitor · Natural Compounds · Compound Libraries · Recombinant Proteins**

This product is for Research Use Only · Not for Human or Veterinary or Therapeutic Use

Tel:781-999-4286 E\_mail:info@targetmol.com Address:34 Washington Street,Wellesley Hills,MA 02481