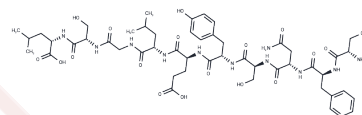


PKCd (8-17)

Chemical Properties

CAS No. :	379711-25-8
Formula:	C50H73N11O18
Molecular Weight:	1116.18
Storage:	Keep away from moisture Powder: -20°C for 3 years In solvent: -80°C for 1 year <small>Actual storage temperature shall be subject to the COA.</small>



Biological Description

Description	PKCd (8-17) is a bioactive peptide originating from the V1 domain of protein kinase C (PKC)d. It impedes phorbol 12-myristate 13-acetate (PMA)-stimulated PKCd translocation and activation, which mitigates ischemic injury in cardiac and cerebral cells, promotes fibroblast proliferation, and suppresses graft coronary artery disease in [mouse models].
Targets(IC50)	PKC

Preparing Stock Solutions

	1mg	5mg	10mg
1 mM	0.8959 mL	4.4796 mL	8.9591 mL
5 mM	0.1792 mL	0.8959 mL	1.7918 mL
10 mM	0.0896 mL	0.448 mL	0.8959 mL
50 mM	0.0179 mL	0.0896 mL	0.1792 mL

Please select the appropriate solvent to prepare the stock solution, according to the solubility of the product in different solvents. Please use it as soon as possible.

Note: The dilution table applies only to solid products. For liquid products, please calculate the stock solution based on the stated concentration and/or density.

Inhibitor · Natural Compounds · Compound Libraries · Recombinant Proteins

This product is for Research Use Only · Not for Human or Veterinary or Therapeutic Use

Tel:781-999-4286 E_mail:info@targetmol.com Address:34 Washington Street,Wellesley Hills,MA 02481