

PLP (178-191)

Chemical Properties

CAS No. : 172228-98-7

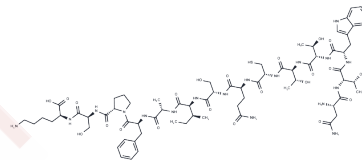
Formula: C70H106N18O22S

Molecular Weight: 1583.76

Keep away from moisture

Storage: Powder: -20°C for 3 years | In solvent: -80°C for 1 year

Actual storage temperature shall be subject to the COA.



Biological Description

Description

PLP (178-191), an immunodominant encephalitogenic epitope from the proteolipid protein (PLP) fragment spanning amino acids 178 to 191, plays a pivotal role in SJL mice. It initiates disease onset earlier compared to the other major encephalitogenic epitope, PLP (139-151), though both epitopes result in similar incidence, severity, and histologic characteristics.

Preparing Stock Solutions

	1mg	5mg	10mg
1 mM	0.6314 mL	3.157 mL	6.3141 mL
5 mM	0.1263 mL	0.6314 mL	1.2628 mL
10 mM	0.0631 mL	0.3157 mL	0.6314 mL
50 mM	0.0126 mL	0.0631 mL	0.1263 mL

Please select the appropriate solvent to prepare the stock solution, according to the solubility of the product in different solvents. Please use it as soon as possible.

Note: The dilution table applies only to solid products. For liquid products, please calculate the stock solution based on the stated concentration and/or density.

Inhibitor · Natural Compounds · Compound Libraries · Recombinant Proteins

This product is for Research Use Only · Not for Human or Veterinary or Therapeutic Use

Tel: 781-999-4286

E_mail: info@targetmol.com

Address: 34 Washington Street, Wellesley Hills, MA 02481