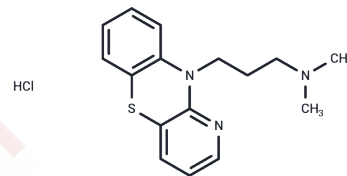


## Prothipendyl hydrochloride

## Chemical Properties

CAS No. :	1225-65-6
Formula:	C <sub>16</sub> H <sub>20</sub> ClN <sub>3</sub> S
Molecular Weight:	321.87
Storage:	Powder: -20°C for 3 years   In solvent: -80°C for 1 year Actual storage temperature shall be subject to the COA.



## Biological Description

Description	Prothipendyl hydrochloride serves as an orally active compound for researching mental symptoms in the elderly, such as anxiety [1].
Targets(IC50)	Others

## Preparing Stock Solutions

	1mg	5mg	10mg
1 mM	3.1068 mL	15.5342 mL	31.0684 mL
5 mM	0.6214 mL	3.1068 mL	6.2137 mL
10 mM	0.3107 mL	1.5534 mL	3.1068 mL
50 mM	0.0621 mL	0.3107 mL	0.6214 mL

Please select the appropriate solvent to prepare the stock solution, according to the solubility of the product in different solvents. Please use it as soon as possible.

Note: The dilution table applies only to solid products. For liquid products, please calculate the stock solution based on the stated concentration and/or density.

Inhibitor · Natural Compounds · Compound Libraries · Recombinant Proteins

This product is for Research Use Only · Not for Human or Veterinary or Therapeutic Use

Tel:781-999-4286 E\_mail:info@targetmol.com Address:34 Washington Street,Wellesley Hills,MA 02481