

REA

Chemical Properties

CAS No. : 945245-82-9

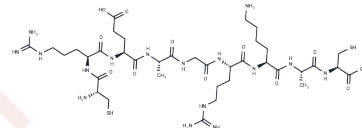
Formula: C37H68N16O12S2

Molecular Weight: 993.17

Keep away from moisture

Storage: Powder: -20°C for 3 years | In solvent: -80°C for 1 year

Actual storage temperature shall be subject to the COA.



Biological Description

Description

REA is a peptide that selectively identifies lymphatic vessels in a premalignant stage rather than those associated with tumor lymphatics [1].

Preparing Stock Solutions

	1mg	5mg	10mg
1 mM	1.0069 mL	5.0344 mL	10.0688 mL
5 mM	0.2014 mL	1.0069 mL	2.0138 mL
10 mM	0.1007 mL	0.5034 mL	1.0069 mL
50 mM	0.0201 mL	0.1007 mL	0.2014 mL

Please select the appropriate solvent to prepare the stock solution, according to the solubility of the product in different solvents. Please use it as soon as possible.

Note: The dilution table applies only to solid products. For liquid products, please calculate the stock solution based on the stated concentration and/or density.

Inhibitor · Natural Compounds · Compound Libraries · Recombinant Proteins

This product is for Research Use Only · Not for Human or Veterinary or Therapeutic Use

Tel:781-999-4286

E_mail:info@targetmol.com

Address:34 Washington Street,Wellesley Hills,MA 02481