

RKLLW-NH2

## Chemical Properties

CAS No. : 289480-71-3

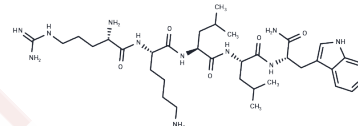
Formula: C35H59N11O5

Molecular Weight: 713.91

Keep away from moisture

Storage: Powder: -20°C for 3 years | In solvent: -80°C for 1 year

Actual storage temperature shall be subject to the COA.



## Biological Description

Description	RKLLW-NH2 is an inhibitor of the protease Cathepsin L [1].
Targets(IC50)	Cysteine Protease

## Preparing Stock Solutions

	1mg	5mg	10mg
1 mM	1.4007 mL	7.0037 mL	14.0074 mL
5 mM	0.2801 mL	1.4007 mL	2.8015 mL
10 mM	0.1401 mL	0.7004 mL	1.4007 mL
50 mM	0.028 mL	0.1401 mL	0.2801 mL

Please select the appropriate solvent to prepare the stock solution, according to the solubility of the product in different solvents. Please use it as soon as possible.

Note: The dilution table applies only to solid products. For liquid products, please calculate the stock solution based on the stated concentration and/or density.

**Inhibitor · Natural Compounds · Compound Libraries · Recombinant Proteins**

This product is for Research Use Only · Not for Human or Veterinary or Therapeutic Use

Tel:781-999-4286

E\_mail:info@targetmol.com

Address:34 Washington Street,Wellesley Hills,MA 02481