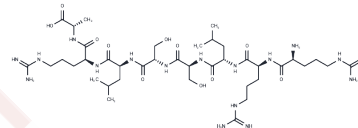


S6 peptide

Chemical Properties

CAS No. :	93674-74-9
Formula:	C39H75N17O11
Molecular Weight:	958.12
Storage:	Keep away from moisture Powder: -20°C for 3 years In solvent: -80°C for 1 year <small>Actual storage temperature shall be subject to the COA.</small>



Biological Description

Description	S6 peptide, a lamin kinase of potential importance, plays a role in the induction of cardiac hypertrophy following mechanical loading and can be activated by various growth factors [1].
Targets(IC50)	S6 Kinase
In vitro	Cardiac myocyte stretching enhances the activity of S6 peptide (50 µg), isolated from the ventricles of 1-day-old Wistar rats, potentially inducing specific gene expression and elevating protein synthesis [1].

Preparing Stock Solutions

	1mg	5mg	10mg
1 mM	1.0437 mL	5.2186 mL	10.4371 mL
5 mM	0.2087 mL	1.0437 mL	2.0874 mL
10 mM	0.1044 mL	0.5219 mL	1.0437 mL
50 mM	0.0209 mL	0.1044 mL	0.2087 mL

Please select the appropriate solvent to prepare the stock solution, according to the solubility of the product in different solvents. Please use it as soon as possible.

Note: The dilution table applies only to solid products. For liquid products, please calculate the stock solution based on the stated concentration and/or density.

Inhibitor · Natural Compounds · Compound Libraries · Recombinant Proteins

This product is for Research Use Only · Not for Human or Veterinary or Therapeutic Use

Tel: 781-999-4286 E_mail: info@targetmol.com Address: 34 Washington Street, Wellesley Hills, MA 02481